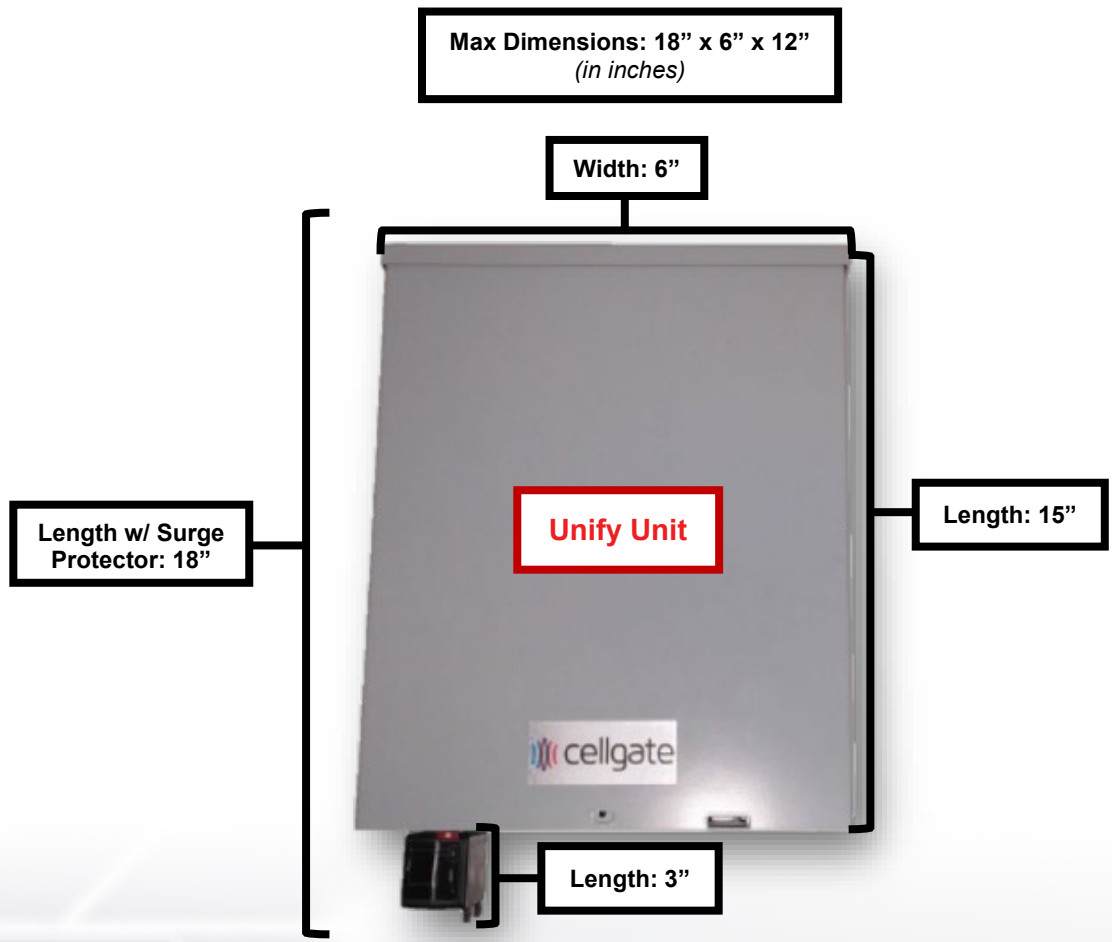




Quick Install Guide

Unify Details & Supported Devices



Camera (up to 4)



**26-bit Wiegand Devices (Up to 4):
Card/RFID/Clicker Reader(s) & Keypad(s)**



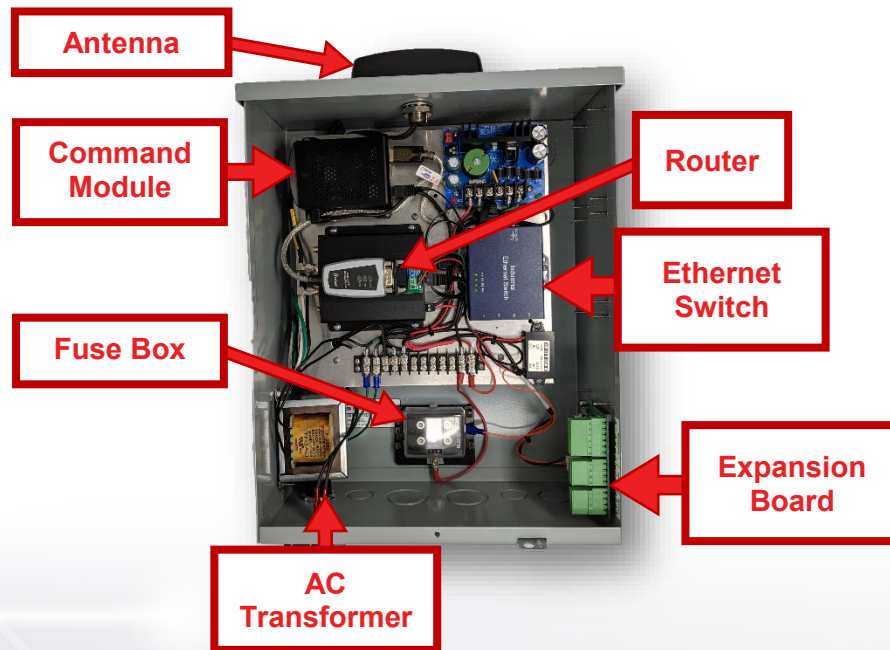
UNIFY

Items Included in Kit

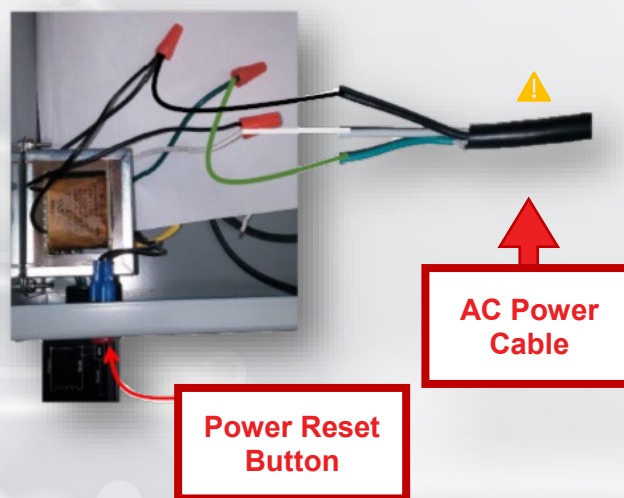
- Unify Unit
- 12v / 5 Amp power supply (built in) ⚠
- AC transformer (built in)
- Quick Install Guide
- Activation & Test Process
- Customer Information Packet

Recommended wiring: 18/6 shielded for main device, and 18/4 shielded for optional wiegand devices ⚠

Unify Unit



Power Supply Wiring

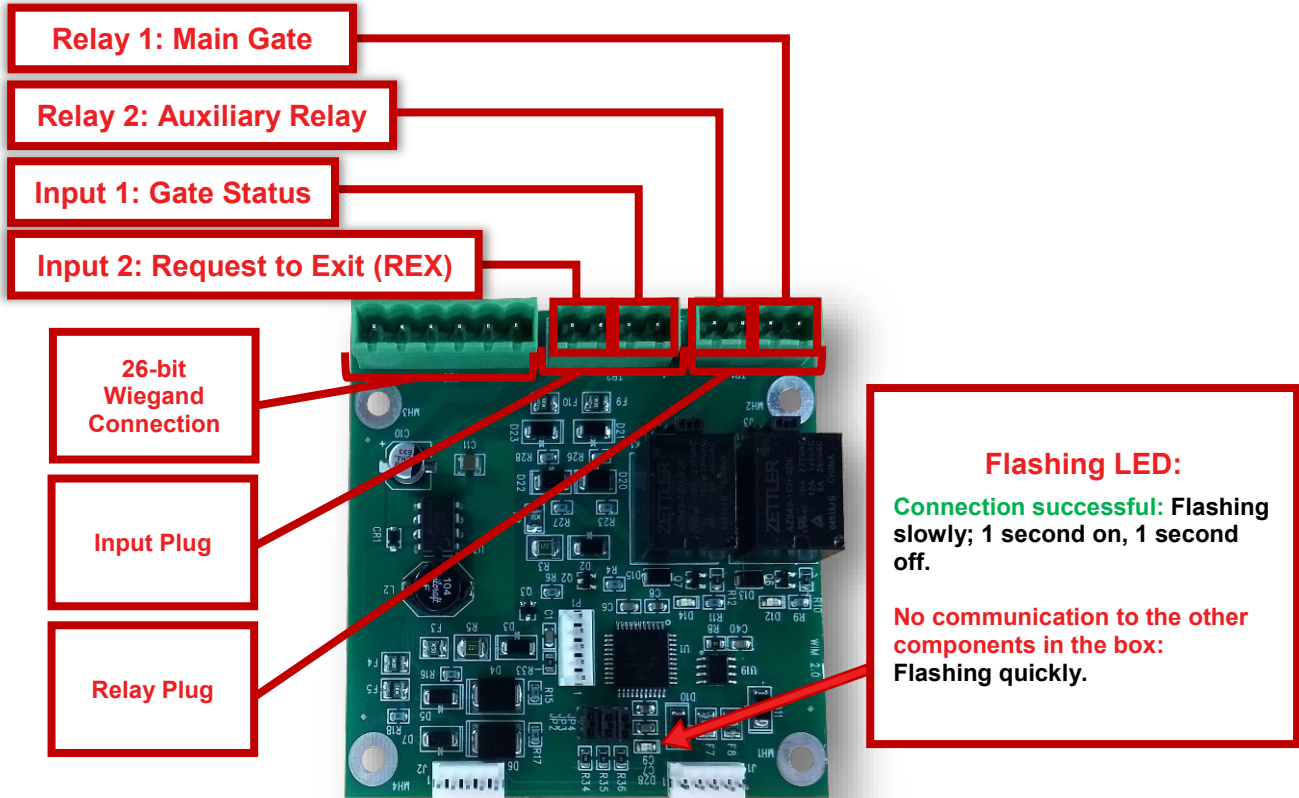


⚠ Important Item

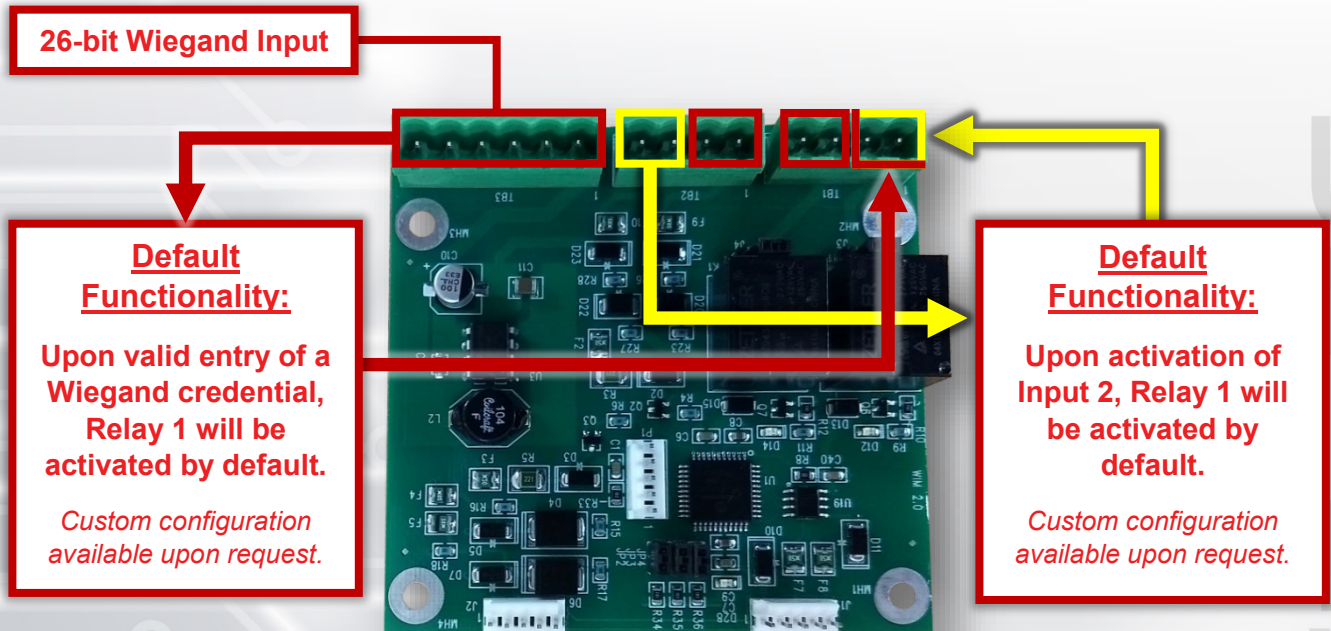


UNIFY

Expansion Board



Expansion Board Default Configuration

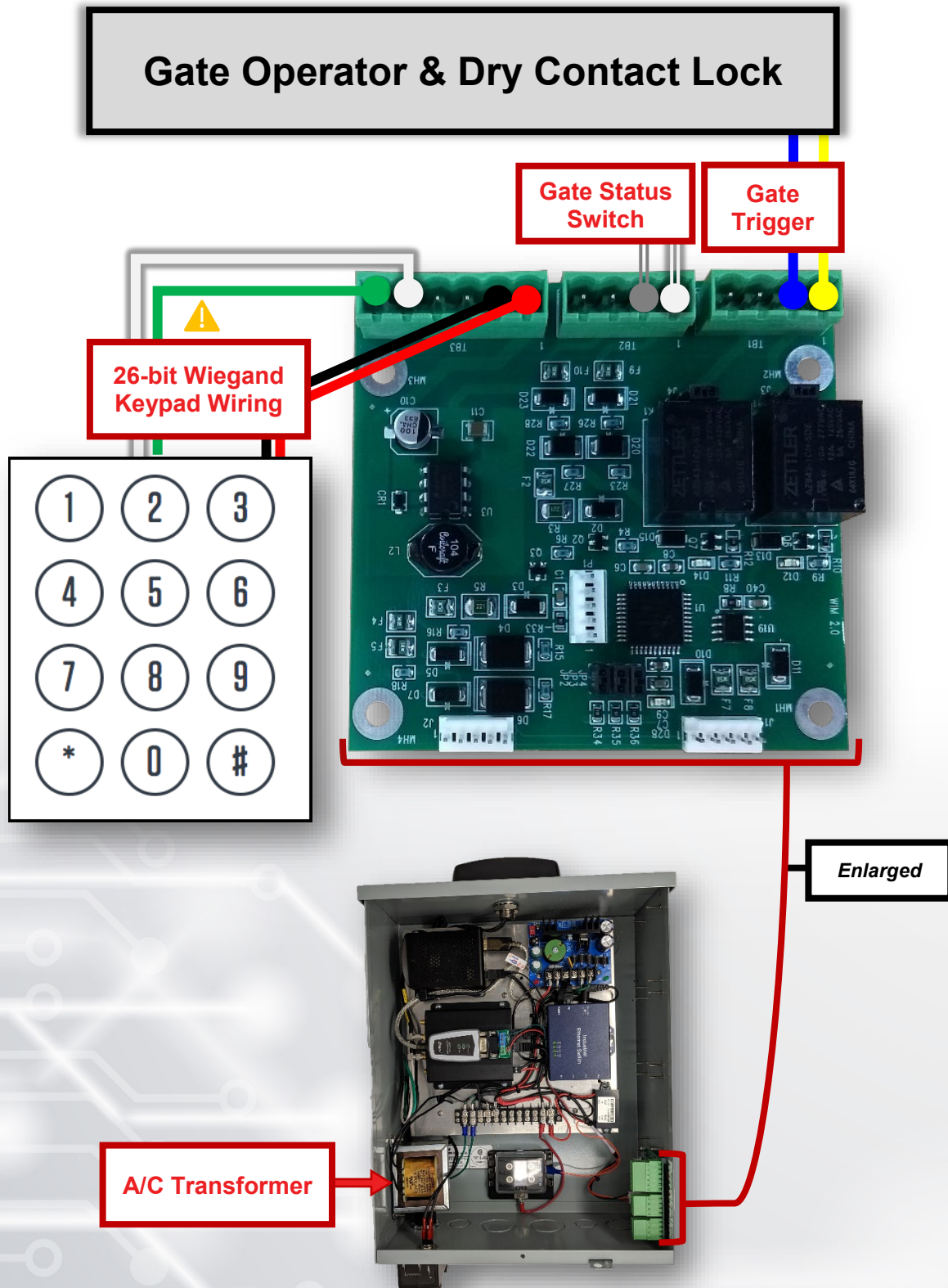



Important Item



Gate Wiring Diagram

Gate Operator & Dry Contact Lock



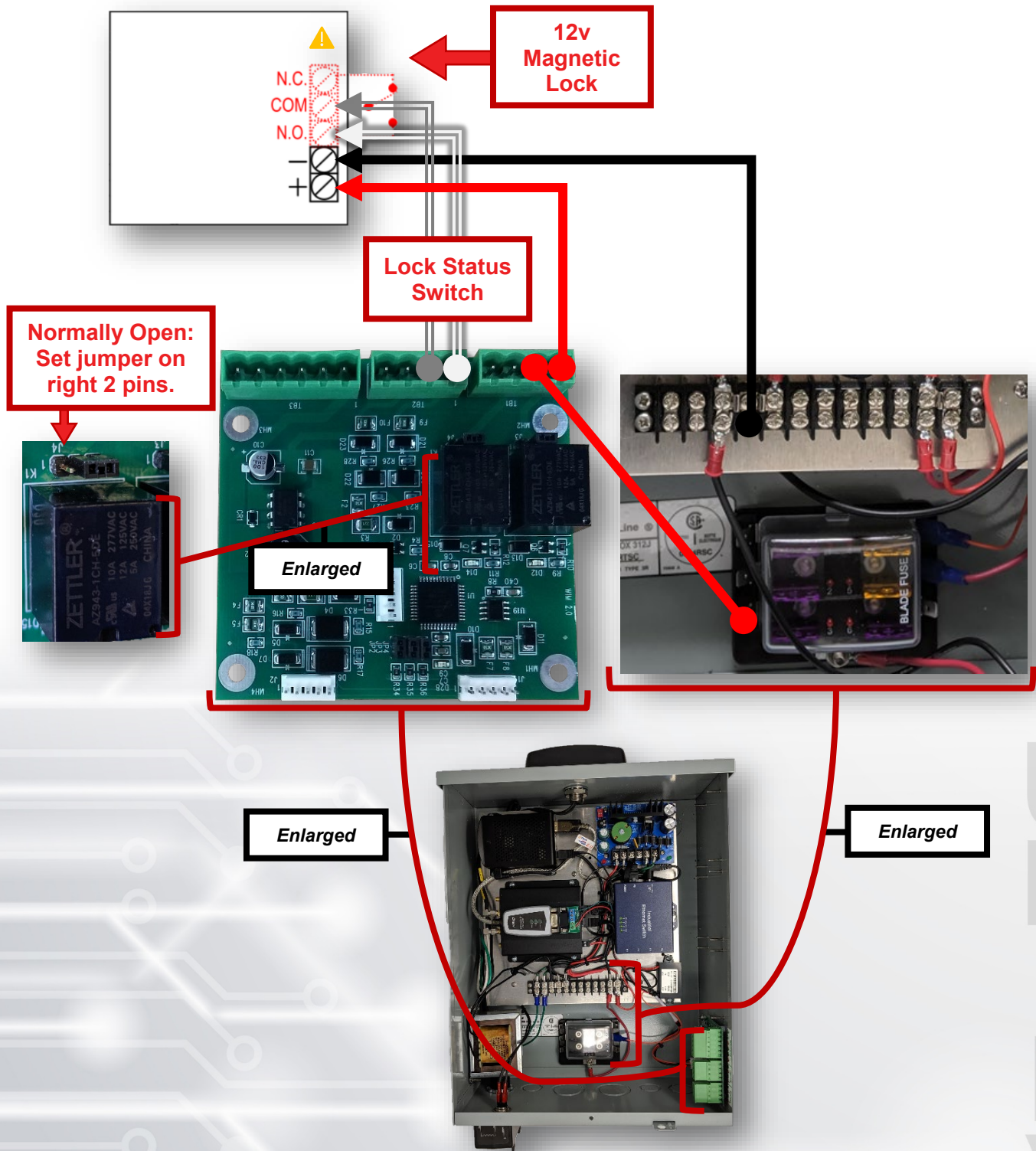
 Important Item



UNIFY



Magnetic Lock Wiring – Normally Open



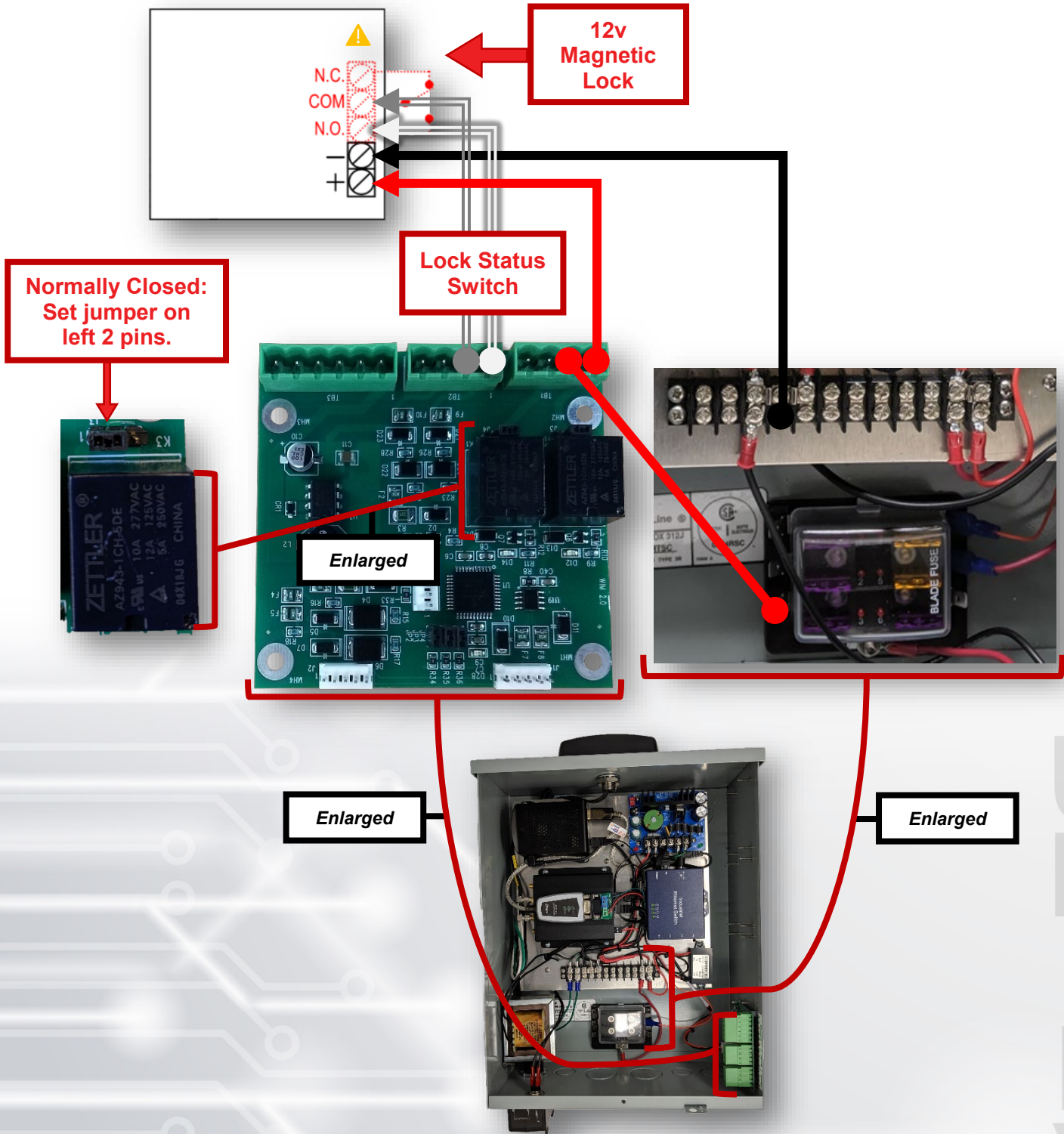
 Important Item



UNIFY



Magnetic Lock Wiring – Normally Closed



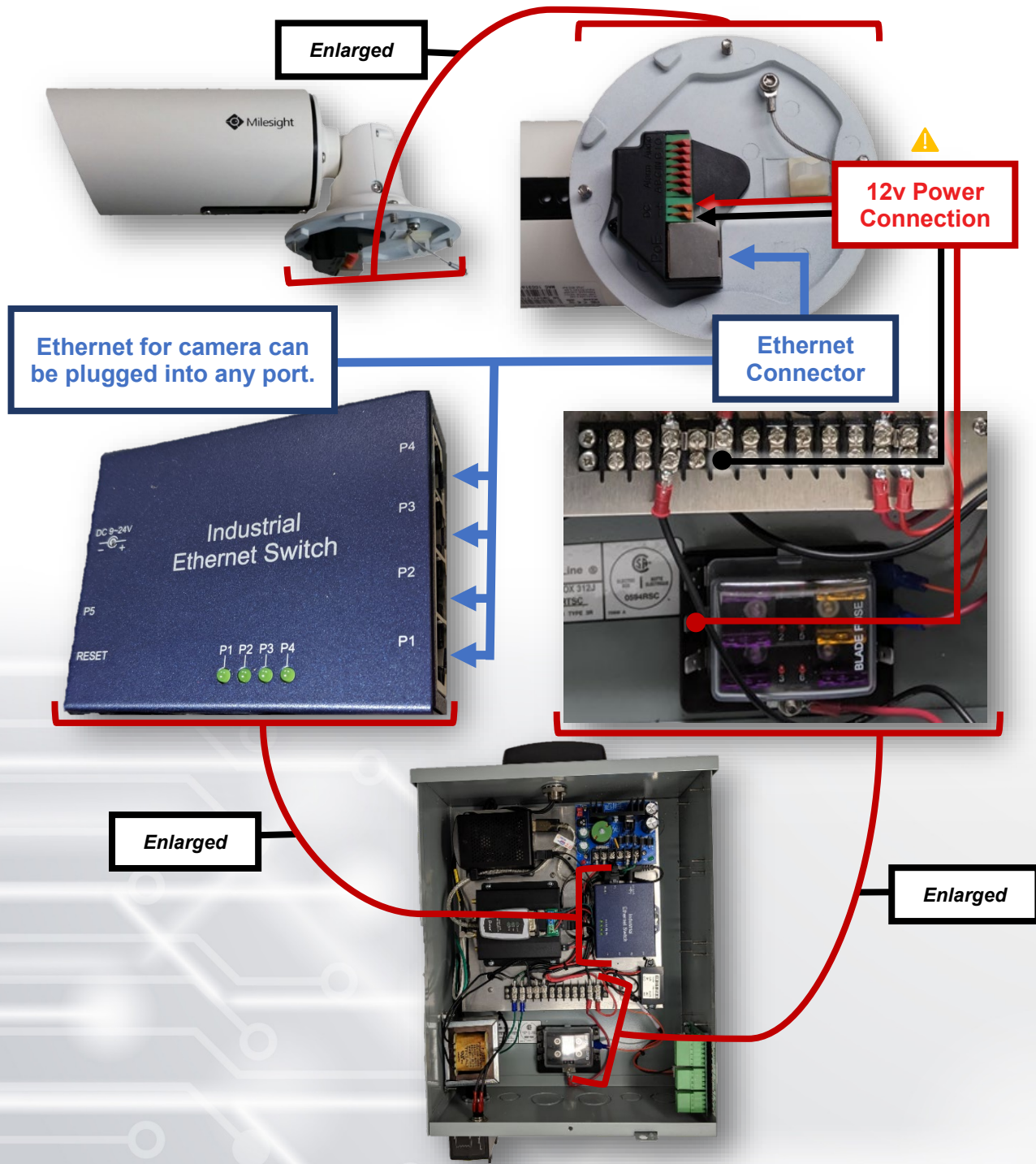
 Important Item



UNIFY

External Camera(s) Wiring

WARNING: DO NOT MAKE ELECTRICAL CONNECTIONS TO CAMERA WITH THE SYSTEM ENERGIZED. THIS WILL DAMAGE THE CAMERA AND IS NOT COVERED UNDER THE CAMERA WARRANTY.



UNIFY

 Important Item

