

ALL-O-MATIC



818-787-1988

allomatic.net

SW-300 DC

SWING GATE OPERATOR

Our first **DC Swing Gate Operator** designed to preserve a gate's beautiful design.



SW-300 DC

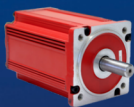
- ✓ For Gates Up To 1,200 Lbs. and 20 Ft. Long
- ✓ Pre-wired Loop Detector Rack
- ✓ Integrated Battery Backup
- ✓ Maintenance Free Brushless DC Motor
- ✓ Heavy Duty Frame
- ✓ Easy Access Door
- ✓ Adjustable Torque Limiter



RESIDENTIAL



COMMERCIAL



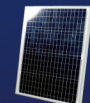
BRUSHLESS
DC MOTOR



INNOVATIVE
CIRCUIT BOARD



WISE M/S
COMPATIBLE



24VDC SOLAR
POWER OPTION

SLIDERS | SWINGERS | OVERHEADS

The standard by which all other automatic gate operators are measured.

SCAN FOR
PRODUCT
INFORMATION



UL 325 2018
COMPLIANT

UL 991
COMPLIANT

CSA C22.2 #247



Intertek

ALL-O-MATIC



818-787-1988

allomatic.net



SCAN FOR
PRODUCT
INFORMATION

SW-300 DC

SWING GATE OPERATOR



SPECS

Max Gate Weight	1,200 lbs.
Max Gate Length	22 feet
Warranty	7 year residential - 5 year commercial
Motor	24 VDC brushless - 1/2 HP motor
Gate Speed	Adjustable 17-25 seconds per 90° opening
Power Options	115/230 VAC single phase and 24 VDC solar panel
Duty Cycle	Continuous
Battery Back Up	Integrated, with (2) 7Ah 12VDC batteries
Battery Back Up Capacity	Up to 250 cycles
Temperature Range	-40 to 160°
Gearbox Ratio	60:1
Width X Length X Height	12" X 17" X 25.5"
Shipping Weight	140 lbs. + 35 lbs. arm
Emergency Release	Quick release arm
Belt Size	4L-370 (AX35)
Main Sprocket Size	40A54TX2 with torque limiter
Chain Size	40NP
Gearbox Sprocket	41B22X7/8
Limit Shaft Sprocket	N/A
Breaker Requirement	20 amp dedicated
Gearbox Pulley	8" with 5/8" bore
Motor Pulley	2" with 5/8" bore



RESIDENTIAL



COMMERCIAL

AVAILABLE ACCESSORIES



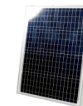
AML-1200B
Mag Lock



GH-1500
Hinges



Fire
Boxes



Solar
Panel



PRIME VD-1
Loop Detector

The Warrantor warrants the SW-300DC Gate Operator. ALL-O-MATIC INC warrants its gate openers for a period of five (5) years in commercial installations, and for a period of seven (7) years in residential installation to be free from defects in circuitry, motor, gear box and workmanship. This warranty applies from the date of purchase to the original owner. Warrantor will repair or, at its option, replace any device which it finds to require service. This device must be sent to the warrantor at the consumer's expense. The warrantor will return the repaired or replaced unit to the customer at the consumer's expense. Labor charges for dealer service or replacement are the responsibility of the owner. These warranties are in lieu of all other warranties either expressed or implied, and ALL-O-MATIC INC shall not be liable for consequential damage. All implied warranties of merchantability and or fitness for a particular purpose are hereby disclaimed and excluded. This limitation is not valid in jurisdictions which do not allow limitation of incidental or consequential damages or limitation of warranty periods. Caution in order to obtain this policy, please complete the registration card and send it by mail within 30 days of purchasing from ALL-O-MATIC INC. or your INSTALLER. If not registered only a one year warranty on all parts will be provided.

The standard by which all other automatic gate operators are measured.

UL 325 2018
COMPLIANT

UL 991
COMPLIANT

CSA C22.2 #247

