

# ALL-O-MATIC



818-787-1988

allomatic.net

## SL-150 DC

SLIDE GATE OPERATOR

Our best-selling Heavy Duty **DC Slide Gate Operator** designed to meet every demand.



### SL-150 DC

- ✓ For Gates Up 60 Ft. Long
- ✓ ½ HP: 3,000 Lbs. – Max Gate Weight  
1 HP: 4,000 lbs. – Max Gate Weight
- ✓ Maintenance Free Brushless DC Motor
- ✓ Integrated Battery Backup
- ✓ Pedestal and Pipe Stand Options Available



RESIDENTIAL



COMMERCIAL



MECHANICAL  
FOOT PEDAL  
RELEASE



INNOVATIVE  
CIRCUIT BOARD



WISE M/S  
COMPATIBLE



24VDC **SOLAR**  
POWER OPTION

**SLIDERS** | **SWINGERS** | **OVERHEADS**

The standard by which all other automatic gate operators are measured.

SCAN FOR  
PRODUCT  
INFORMATION



UL 325 2018  
COMPLIANT

UL 991  
COMPLIANT

CSA C22.2 #247



# ALL-O-MATIC



818-787-1988

allomatic.net

SCAN FOR  
PRODUCT  
INFORMATION



## SL-150 DC

SLIDE GATE OPERATOR



## SPECS

<b>Max Gate Weight</b>	½ HP: 3,000 lbs. 1 HP: 4,000 lbs.
<b>Max Gate Length</b>	60 feet
<b>Warranty</b>	7 year residential - 5 year commercial
<b>Motor</b>	24 VDC brushless – ½ HP and 1 HP motor
<b>Gate Speed</b>	12" per second
<b>Power Options</b>	115/230 VAC single phase and 24 VDC solar panel
<b>Duty Cycle</b>	Continuous
<b>Battery Back Up</b>	Integrated, with (2) 7Ah 12VDC batteries
<b>Battery Back Up Capacity</b>	100 cycles on a 1,000 lb. gate
<b>Temperature Range</b>	-40 to 160°
<b>Gearbox Ratio</b>	30:1 with internal clutch
<b>Width X Length X Height</b>	15" X 19.5" X 25"
<b>Shipping Weight</b>	150 lbs.
<b>Emergency Release</b>	Mechanical foot pedal release
<b>Belt Size</b>	N/A
<b>Main Sprocket Size</b>	40B22X1
<b>Chain Size</b>	40NP (20' included)
<b>Gearbox Sprocket</b>	40B22X1
<b>Limit Shaft Sprocket</b>	41B10X5/8
<b>Breaker Requirement</b>	20 amp dedicated
<b>Gearbox Pulley</b>	N/A
<b>Motor Pulley</b>	N/A

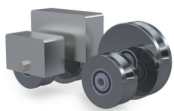
### AVAILABLE ACCESSORIES



RESIDENTIAL



COMMERCIAL



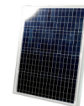
V-Groove  
Wheels



TK-1000  
Tandem Kit



Fire  
Boxes



Solar  
Panel



PRIME VD-1  
Loop Detector

The Warrantor warrants the SL-150 DC Gate Operator. ALL-O-MATIC INC warrants its gate openers for a period of five (5) years in commercial installations, and for a period of seven (7) years in residential installation to be free from defects in circuitry, motor, gear box and workmanship. This warranty applies from the date of purchase to the original owner. Warrantor will repair or, at its option, replace any device which it finds to require service. This device must be sent to the warrantor at the consumer's expense. The warrantor will return the repaired or replaced unit to the customer at the consumer's expense. Labor charges for dealer service or replacement are the responsibility of the owner. These warranties are in lieu of all other warranties either expressed or implied, and ALL-O-MATIC INC shall not be liable for consequential damage. All implied warranties of merchantability and or fitness for a particular purpose are hereby disclaimed and excluded. This limitation is not valid in jurisdictions which do not allow limitation of incidental or consequential damages or limitation of warranty periods. Caution in order to obtain this policy, please complete the registration card and send it by mail within 30 days of purchasing from ALL-O-MATIC INC. or your INSTALLER. If not registered only a one year warranty on all parts will be provided.

The standard by which all other automatic gate operators are measured.

UL 325 2018  
COMPLIANT

UL 991  
COMPLIANT

CSA C22.2 #247

