

# ALL-O-MATIC



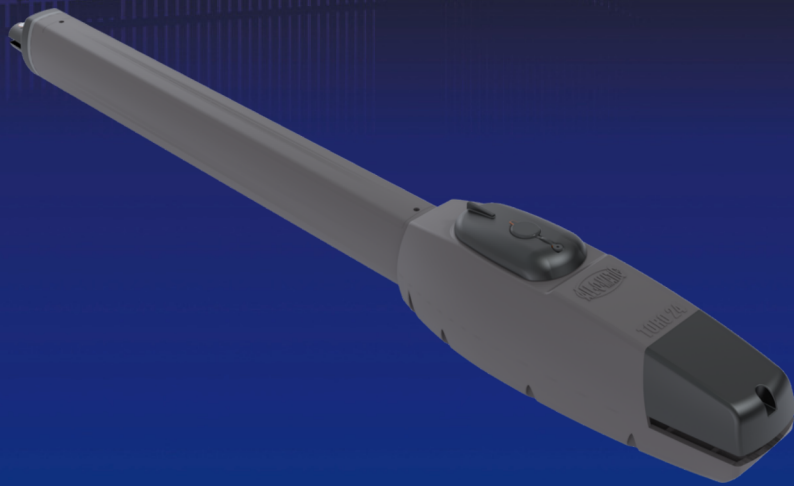
818-787-1988

allomatic.net

## TORO24PRIME

SWING ACTUATOR

Our **Swing Actuator** was designed to preserve a gate's beautiful design.

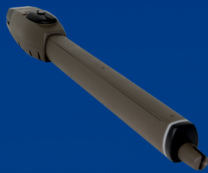


### TORO24 PRIME

- ✓ For Gates Up To 18 ft & 22 Ft. Long
- ✓ Manual Key Release for Easy Access
- ✓ New Modern & Polished Design With Uninterrupted Power Supply
- ✓ Programmable Logic and an Advanced Charge Controller Enhanced for Solar Applications
- ✓ Control Board With an Array of Features



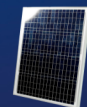
MANUAL KEY RELEASE



INNOVATIVE  
CIRCUIT BOARD



PRE-WIRED LOOP RACK



24VDC SOLAR  
POWER OPTION

**SLIDERS** | **SWINGERS** | **OVERHEADS**

The standard by which all other automatic gate operators are measured.

SCAN FOR  
PRODUCT  
INFORMATION



UL 325 2018  
COMPLIANT

UL 991  
COMPLIANT

CSA C22.2 #247



# ALL-O-MATIC



818-787-1988

allomatic.net

SCAN FOR  
PRODUCT  
INFORMATION

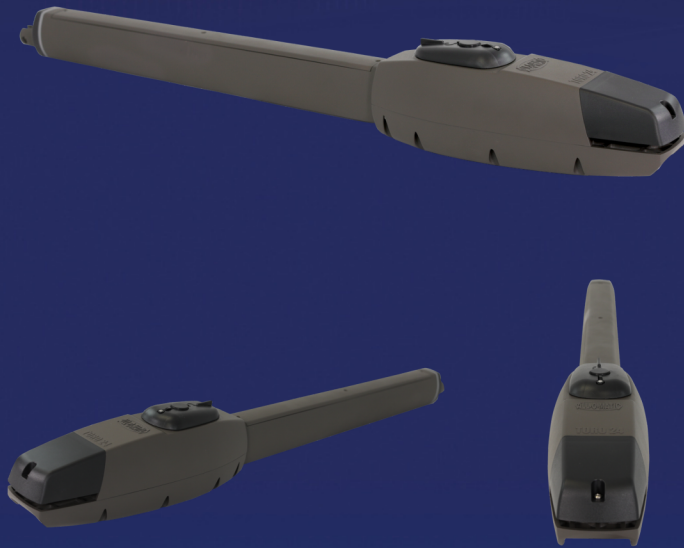


## SPECS

# TORO24

## PRIME SWING ACTUATOR

<b>Max Gate Weight</b>	8 feet/1,600 lbs. 12 feet/1,200 lbs.
<b>Max Gate Length</b>	16 feet/800 lbs. 18 feet/600 lbs.
<b>Warranty</b>	4 year residential - 3 year commercial
<b>Motor</b>	N/A
<b>Gate Speed</b>	Adjustable 15-20 seconds per 90° opening
<b>Power Options</b>	115/230 VAC single phase and 24 VDC solar panel
<b>Duty Cycle</b>	Continuous
<b>Battery Back Up</b>	Integrated, with (2) 7Ah 12VDC batteries
<b>Battery Back Up Capacity</b>	Up to 450 cycles
<b>Temperature Range</b>	-40 to 160°
<b>Gearbox Ratio</b>	N/A
<b>Width X Length X Height</b>	Fully retracted arm: 38-39" Fully extended arm: 59"
<b>Shipping Weight</b>	Control box: 55 lbs. Arm: 25 lbs.
<b>Emergency Release</b>	Keyed manual release
<b>Belt Size</b>	N/A
<b>Main Sprocket Size</b>	N/A
<b>Chain Size</b>	N/A
<b>Gearbox Sprocket</b>	N/A
<b>Limit Shaft Sprocket</b>	N/A
<b>Breaker Requirement</b>	20 amp dedicated
<b>Gearbox Pulley</b>	N/A
<b>Motor Pulley</b>	N/A
<b>Motor Pulley</b>	2" with 5/8" bore



RESIDENTIAL



LIGHT COMMERCIAL

### AVAILABLE ACCESSORIES



AML-1200B  
Mag Lock



GH-1500  
Hinges



Fire  
Boxes



Solar  
Panel



PRIME VD-1  
Loop Detector

The Warrantor warrants the TORO24 PRIME Gate Operator. ALL-O-MATIC INC warrants its gate openers for a period of five (3) years in commercial installations, and for a period of seven (4) years in residential installation to be free from defects in circuitry, motor, gear box and workmanship. This warranty applies from the date of purchase to the original owner. Warrantor will repair or, at its option, replace any device which it finds to require service. This device must be sent to the warrantor at the consumer's expense. The warrantor will return the repaired or replaced unit to the customer at the consumer's expense. Labor charges for dealer service or replacement are the responsibility of the owner. These warranties are in lieu of all other warranties either expressed or implied, and ALL-O-MATIC INC shall not be liable for consequential damage. All implied warranties of merchantability and or fitness for a particular purpose are hereby disclaimed and excluded. This limitation is not valid in jurisdictions which do not allow limitation of incidental or consequential damages or limitation of warranty periods. Caution in order to obtain this policy, please complete the registration card and send it by mail within 30 days of purchasing from ALL-O-MATIC INC. or your INSTALLER. If not registered only a one year warranty on all parts will be provided.

**SLIDERS | SWINGERS | OVERHEADS**

The standard by which all other automatic gate operators are measured.

UL 325 2018  
COMPLIANT

UL 991  
COMPLIANT

CSA C22.2 #247

